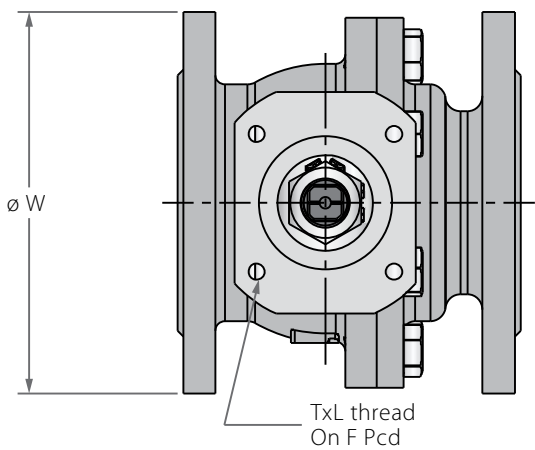
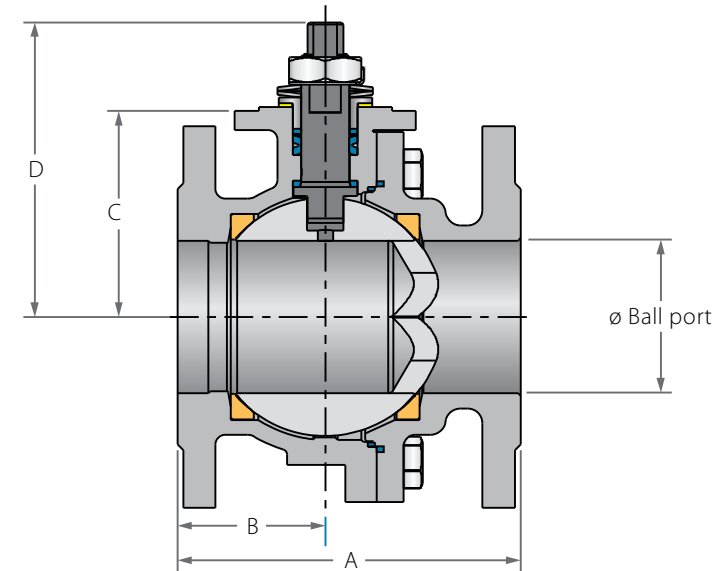
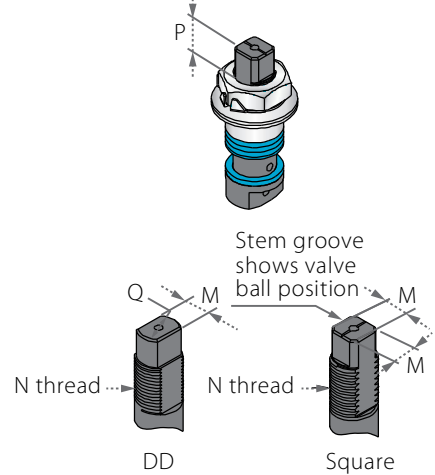


Control Flanged Floating Ball

Valve dimensions



Preparation for actuation

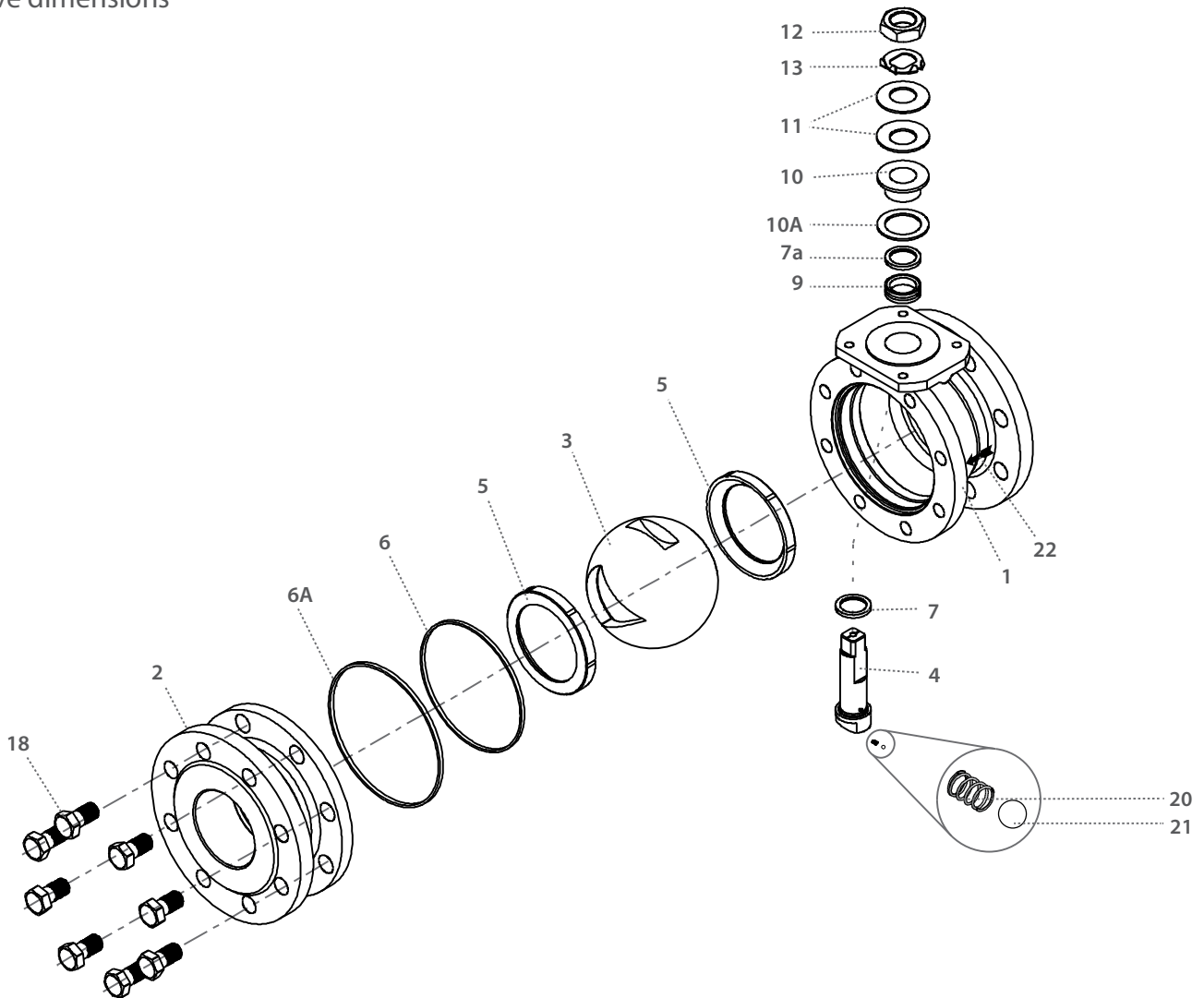


Std. port	Unit	Ball port	A			B	C	D	W	M	N	P	F	TxL	Weight kg/lb			
			F1	F2	F3										F1	F2	F3	
DN80	mm	80.00	310.00	180.00	-	108.00	77.50	162.00	200.00	18.90	M24	22.70	(F10)	102.00	M10x20	26	24	25
3"	inch	3.20	12.20	7.09	-	4.25	3.05	6.40	7.87	0.74		0.89	4.02	57		53	55	
DN100	mm	100.00	350.00	190.00	-	132.00	84.50	186.00	225.00	18.90	M24	22.70	(F10)	102.00	M10x20	34	30	34
4"	inch	3.94	13.78	7.48	-	5.20	3.33	7.32	8.86	0.74		0.89	4.02	75		66	75	
DN150	mm	150.00	-	-	350.00	178.00	163.50	236.00	328.00	28.45	M35	35.20	(F12)	125.00	M12x20	-	-	63
6"	inch	5.91	-	-	13.78	7.01	6.44	9.29	12.91	1.12		1.39	4.92	-		-	139	



Control Flanged Floating Ball

Valve dimensions



Item	Description	Material specification	Qty.
1	Body	Acc. Ordering Code	1
2	End	Acc. Ordering Code	1
3	V-Ball	Acc. Ordering Code	1
4	Stem	Acc. Ordering Code	1
5*	Seat	Acc. Ordering Code	2
6*	Body seal	PTFE	2
6A*	Outer seal	Acc. Ordering Code	2
7*	Stem thrust seal	PEEK, CF PEEK, PCTFE, CF PTFE	1
7a*	Anti-abrasion ring	PEEK, CF PEEK, PCTFE, CF PTFE	1
9*	Stem seal	CF PTFE, TFM	1
10	Follower	S. Steel	1

Item	Description	Material specification	Qty.
10A	Slide bearing	S. Steel	1
11	Disc spring	S. Steel	2
12	Stem nut	S. Steel	1
13	Tab lock washer	S. Steel	1
18	Body bolts	S. Steel	8-10
20	Anti-static spring	S. Steel	1
21	Anti-static plunger	S. Steel	1
22		S. Steel	1
23	Tag (not shown)	S. Steel	1

* Standard items supplied in repair kits