

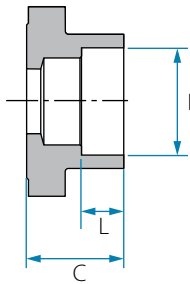
# Technical information

## End connections



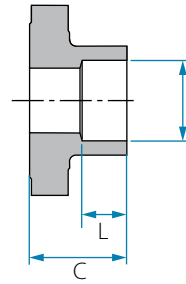
## End connections

### SW



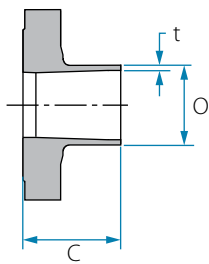
Valve Size		SW		
		ø I	L	C
DN8	mm	14.100	11.000	23.000
1/4"	inch	0.555	0.433	0.906
DN10	mm	17.600	11.000	23.000
3/8"	inch	0.693	0.433	0.906
DN15	mm	21.800	11.000	23.000
1/2"	inch	0.858	0.433	0.906
DN20	mm	27.100	13.500	23.000
3/4"	inch	1.067	0.531	0.906
DN25	mm	34.200	13.500	31.000
1"	inch	1.346	0.531	1.220
DN32	mm	42.900	13.500	33.400
1 1/4"	inch	1.687	0.531	1.315
DN40	mm	48.700	13.500	33.400
1 1/2"	inch	1.917	0.531	1.315
DN50	mm	61.200	17.500	35.500
2"	inch	2.409	0.689	1.398
DN65	mm	73.700	29.300	39.300
2 1/2"	inch	2.902	1.154	1.545
DN80	mm	89.550	33.100	42.900
3"	inch	3.526	1.303	1.688
DN100	mm	114.900	39.900	52.400
4"	inch	4.524	1.571	2.063

### SWO



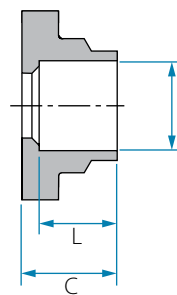
Valve Size		SWO		
		ø I	L	C
DN8	mm	6.500	9.800	22.600
1/4"	inch	0.254	0.384	0.890
DN10	mm	9.800	9.800	22.600
3/8"	inch	0.386	0.384	0.890
DN15	mm	12.900	11.300	22.600
1/2"	inch	0.508	0.443	0.890
DN20	mm	19.300	14.300	23.000
3/4"	inch	0.758	0.561	0.906
DN25	mm	25.600	14.300	31.000
1"	inch	1.008	0.561	1.220
DN32	mm	32.100	14.300	33.400
1 1/4"	inch	1.262	0.561	1.315
DN40	mm	38.700	14.300	33.400
1 1/2"	inch	1.524	0.561	1.315
DN50	mm	51.100	14.300	35.800
2"	inch	2.010	0.561	1.409
DN65	mm	63.800	19.500	42.700
2 1/2"	inch	2.510	0.768	1.681
DN80	mm	76.500	19.500	42.700
3"	inch	3.012	0.768	1.681
DN100	mm	101.900	19.500	52.400
4"	inch	4.012	0.768	2.063

### BWO



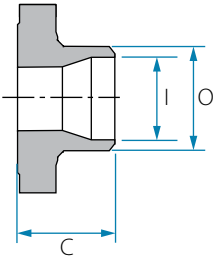
Valve Size		BWO		
		ø I	L	C
DN8	mm	0.890	6.350	22.700
1/4"	inch	0.035	0.250	0.894
DN10	mm	1.240	9.530	22.700
3/8"	inch	0.049	0.375	0.894
DN15	mm	1.650	12.700	22.700
1/2"	inch	0.065	0.500	0.894
DN20	mm	1.650	19.050	23.000
3/4"	inch	0.065	0.750	0.906
DN25	mm	1.650	25.400	31.100
1"	inch	0.065	1.000	1.224
DN32	mm	1.650	31.750	33.400
1 1/4"	inch	0.065	1.250	1.315
DN40	mm	1.650	38.100	32.800
1 1/2"	inch	0.065	1.500	1.291
DN50	mm	1.650	50.800	35.800
2"	inch	0.065	2.000	1.409
DN65	mm	1.650	63.500	42.700
2 1/2"	inch	0.065	2.500	1.681
DN80	mm	1.650	76.200	37.750
3"	inch	0.065	3.000	1.486
DN100	mm	2.100	101.600	43.000
4"	inch	0.083	4.000	1.693

### KLM



Valve Size		KLM		
		ø I	L	C
DN8	mm	9.700	5.900	21.600
1/4"	inch	0.382	0.232	0.850
DN10	mm	12.900	9.400	21.600
3/8"	inch	0.508	0.370	0.850
DN15	mm	16.050	11.900	21.600
1/2"	inch	0.634	0.469	0.850
DN20	mm	22.400	18.900	23.000
3/4"	inch	0.888	0.744	0.906
DN25	mm	28.700	24.900	30.000
1"	inch	1.130	0.980	1.181
DN32	mm	35.000	25.900	33.400
1 1/4"	inch	1.378	1.020	1.315
DN40	mm	41.700	26.900	33.500
1 1/2"	inch	1.642	1.630	1.319
DN50	mm	54.200	26.900	35.500
2"	inch	2.134	1.630	1.398
DN65	mm	66.850	42.700	42.700
2 1/2"	inch	2.632	1.681	1.681
DN80	mm	79.550	34.500	44.250
3"	inch	3.132	1.358	1.742
DN100	mm	105.000	40.000	52.400
4"	inch	4.134	1.575	2.063

**BW SCH 10/40/80**

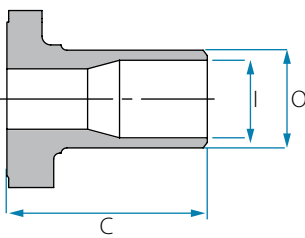


Valve Size		BW SCH 10		
		ø l	L	C
DN8	mm	10.300	14.000	22.700
1/4"	inch	0.406	0.551	0.894
DN10	mm	13.700	17.300	22.700
3/8"	inch	0.539	0.681	0.894
DN15	mm	17.000	21.500	22.700
1/2"	inch	0.669	0.846	0.894
DN20	mm	22.400	26.900	23.000
3/4"	inch	0.882	1.059	0.906
DN25	mm	27.800	33.600	31.000
1"	inch	1.094	1.323	1.220
DN32	mm	36.500	42.600	33.400
1 1/4"	inch	1.437	1.677	1.315
DN40	mm	42.600	48.500	33.500
1 1/2"	inch	1.677	1.909	1.319
DN50	mm	54.700	60.500	35.800
2"	inch	2.154	2.382	1.409
DN65	mm	67.100	73.200	42.700
2 1/2"	inch	2.642	2.882	1.681
DN80	mm	82.600	89.100	42.900
3"	inch	3.252	3.508	1.689
DN100	mm	106.200	113.900	52.400
4"	inch	4.181	4.484	2.063

BW SCH 40		
ø l	L	C
9.300	14.000	22.700
0.366	0.551	0.894
12.500	17.300	22.700
0.492	0.681	0.894
15.800	21.500	22.700
0.622	0.846	0.894
20.900	26.900	23.000
0.823	1.059	0.906
26.500	33.600	31.000
1.043	1.323	1.220
35.100	42.600	33.400
1.382	1.677	1.315
40.900	48.500	33.500
1.610	1.909	1.319
52.600	60.500	35.800
2.071	2.382	1.409
62.700	73.200	42.700
2.469	2.882	1.681
77.900	89.100	42.900
3.067	3.508	1.689
102.300	113.900	52.400
4.028	4.484	2.063

BW SCH 80		
ø l	L	C
7.700	14.000	22.700
0.303	0.551	0.894
10.300	17.300	22.700
0.406	0.681	0.894
13.800	21.500	22.700
0.543	0.846	0.894
18.800	26.900	23.000
0.740	1.059	0.906
24.300	33.600	31.000
0.957	1.323	1.220
32.500	42.600	33.400
1.280	1.677	1.315
38.100	48.500	33.500
1.500	1.909	1.319
49.300	60.500	35.800
1.941	2.382	1.409
59.200	73.200	42.700
2.331	2.882	1.681
73.700	89.100	42.900
2.902	3.508	1.689
97.200	113.900	52.400
3.827	4.484	2.063

**XBW**



Valve Size		XBW 10		
		ø l	L	C
DN8	mm	10.4	13.72	60
1/4"	inch	0.409	0.54	2.362
DN10	mm	14.85	17.15	60
3/8"	inch	0.585	0.675	2.362
DN15	mm	17.12	21.34	60
1/2"	inch	0.674	0.84	2.362
DN20	mm	22.45	26.67	61
3/4"	inch	0.884	1.05	2.402
DN25	mm	27.86	33.4	68.5
1"	inch	1.097	1.315	2.697
DN32	mm	36.62	42.16	69
1 1/4"	inch	1.442	1.66	2.717
DN40	mm	42.72	48.26	70.5
1 1/2"	inch	1.682	1.9	2.776
DN50	mm	54.79	60.33	72
2"	inch	2.157	2.375	2.835
DN65	mm	66.93	73.03	100
2 1/2"	inch	2.635	2.875	3.937
DN80	mm	82.8	88.9	120
3"	inch	3.26	3.5	4.724
DN100	mm	108.2	114.3	120
4"	inch	4.26	4.5	4.724

XBW 40		
ø l	L	C
9.24	13.72	60
0.364	0.54	2.362
12.53	17.15	60
0.493	0.675	2.362
15.8	21.34	60
0.622	0.84	2.362
20.93	26.67	61
0.824	1.05	2.402
26.64	33.4	68.5
1.049	1.315	2.697
35.04	42.16	69
1.38	1.66	2.717
40.9	48.26	70.5
1.61	1.9	2.776
52.51	60.33	72
2.067	2.375	2.835
62.71	73.03	100
2.469	2.875	3.937
76.92	88.9	120
3.028	3.5	4.724
102.26	114.3	120
4.026	4.5	4.724

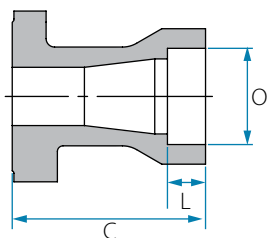
XBW 80		
ø l	L	C
7.68	13.72	60
0.302	0.54	2.362
10.75	17.15	60
0.423	0.675	2.362
13.88	21.34	60
0.546	0.84	2.362
18.85	26.67	61
0.742	1.05	2.402
24.3	33.4	68.5
0.957	1.315	2.697
32.46	42.16	69
1.278	1.66	2.717
38.1	48.26	70.5
1.5	1.9	2.776
49.25	60.33	72
1.939	2.375	2.835
59.01	73.03	100
2.323	2.875	3.937
73.66	88.9	120
2.9	3.5	4.724
97.18	114.3	120
3.826	4.5	4.724

## End connections

ANSI B16.5

DIN EN1092

### XSW



Valve Size		SW		
		ø I	L	C
DN8	mm	14.4	11	60
1/4"	inch	0.567	0.433	2.362
DN10	mm	17.8	11	60
3/8"	inch	0.701	0.433	2.362
DN15	mm	22	11	60
1/2"	inch	0.866	0.433	2.362
DN20	mm	27.4	13.5	61.2
3/4"	inch	1.079	0.531	2.409
DN25	mm	34.1	13.5	68.5
1"	inch	1.343	0.531	2.697
DN32	mm	42.9	13.5	69
1 1/4"	inch	1.689	0.531	2.717
DN40	mm	49	13.5	70.5
1 1/2"	inch	1.929	0.531	2.776
DN50	mm	61.45	17.5	72
2"	inch	2.419	0.689	2.835
DN65	mm	74.15	29.3	100
2 1/2"	inch	2.919	1.154	3.937
DN80	mm	90	33	120
3"	inch	3.543	1.299	4.724
DN100	mm	115.45	35	120
4"	inch	4.545	1.378	4.724





[www.habonim.com](http://www.habonim.com)

**Habonim ISRAEL**

Tel: +972-4-6914911

Fax: +972-4-6914935

[sales\\_international@habonim.com](mailto:sales_international@habonim.com)

**Habonim EUROPE**

Tel: +34 640 384 759

[sales\\_eu@habonim.com](mailto:sales_eu@habonim.com)

**Habonim UK**

Tel: +44-1633-484554

Fax: +44-1633-482252

[sales\\_uk@habonim.com](mailto:sales_uk@habonim.com)

**Habonim USA**

Toll Free Phone: 1-866-261-8400

Toll Free Fax: 1-866-243-9959

[sales\\_usa@habonim.com](mailto:sales_usa@habonim.com)

**Habonim CHINA**

Tel: + 86 21 64453190 \*146

[sales\\_china@habonim.com](mailto:sales_china@habonim.com)

**Habonim AUSTRALIA**

Tel: +61 3 9556 5428

[sales\\_au@habonimau.com](mailto:sales_au@habonimau.com)



[www.habonim.com](http://www.habonim.com)

MAXMARK Technical Information-End connections 04/17 REV2.04

MAXMARK

